

Sensor visualization, data gathering and alert notifications all included!

# KDDI IoT Cloud Standard Logger Course

## Improve your business efficiency, cut costs and increase profits

### Supports over 2,000\* sensor types

We support not only temperature, humidity and GPS sensors, but vibration, noise, flow, heat and human sensors.

\*: Based on data taken in Japan

### Form output and screen customization

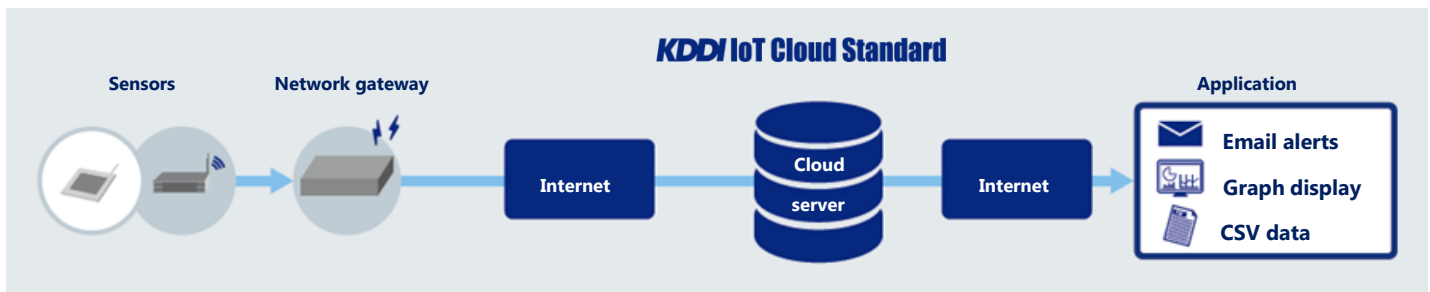
Daily and monthly reports, alert notifications when thresholds are passed, and screen customization according to the customer's needs.

### Providing all of your ICT needs

We can supply not only the sensors and network equipment needed for the Logger course, but also LAN/WAN infrastructure for your offices or sensor-installing factories.

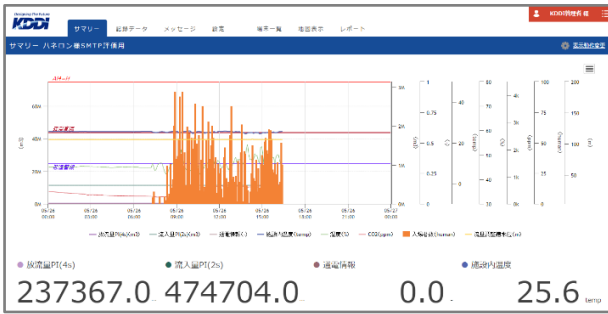
## System makeup

**Sensors, cloud service and data display, all provided!**



**Connection is via Internet, so access from any provider, even from overseas!**

## Data view screenshots



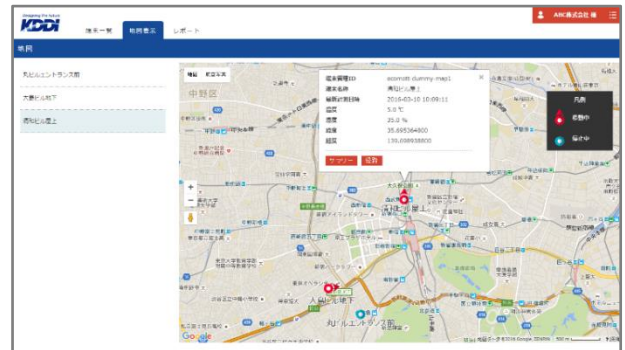
Display the latest measurement data

運転管理日報		
現場名	XXXXX処理場	
集計対象日	2016/03/24	
時刻	**流量	△△流量
	合計:±03	合計:±03
0:00	2.5	2.5
1:00	2.4	2.6
2:00	2.4	2.4
3:00	2.2	2.6
4:00	2.3	5.6
5:00	2.1	4.5
6:00	4.5	4.5
7:00	4.3	3.2
8:00	4.3	2.8
9:00	3.4	5.6

Output measured data in Excel format

測定日時	A13モード (温度)	A13計測値	A13モード (湿度)	A13計測値	A13モード (CO2ppm)	A13計測値	A14モード (電圧)	A14計測値	A14モード (電流)	A14計測値
2016/03/18 09:20:00	(-)	43.903327499	4.0	141.356719999	1.0	24.0	0.0	24.0	2.0	2.0
2016/03/18 09:24:00	(-)	43.903327499	2.0	141.356719999	3.0	24.0	3.0	24.0	4.0	4.0
2016/03/18 09:28:00	(-)	43.903327499	3.0	141.356719999	1.0	24.0	2.0	24.0	3.0	3.0
2016/03/18 09:32:00	(-)	43.903327499	3.0	141.356719999	2.0	24.0	3.0	24.0	3.0	3.0
2016/03/18 09:36:00	(-)	43.903327499	1.0	141.356719999	3.0	24.0	3.0	24.0	2.0	2.0
2016/03/18 09:40:00	(-)	43.903327499	3.0	141.356719999	2.0	24.0	1.0	24.0	2.0	2.0
2016/03/18 09:44:00	(-)	43.903327499	3.0	141.356719999	-1.0	24.0	1.0	24.0	4.0	4.0
2016/03/18 09:48:00	(-)	43.903327499	3.0	141.356719999	3.0	24.0	3.0	24.0	1.0	1.0
2016/03/18 09:52:00	(-)	43.903327499	3.0	141.356719999	3.0	24.0	1.0	24.0	2.0	2.0
2016/03/18 09:56:00	(-)	43.903327499	3.0	141.356719999	2.0	24.0	2.0	24.0	2.0	2.0

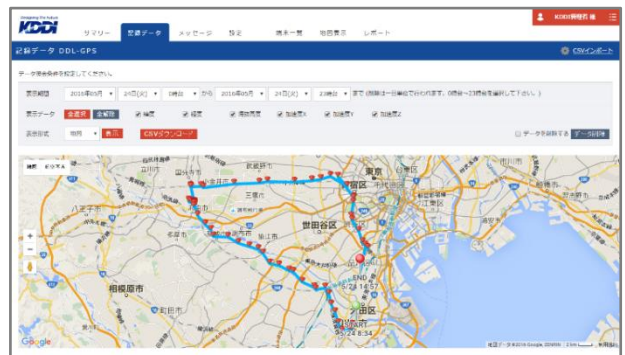
Display recorded measurement data



Display latitude and longitude of terminals

日時	通知NO	通知メッセージ	イベントメールアドレス
2016/05/26 09:09:48	5	501	DMA-T2K_A11(C01)下道異常検出
2016/05/26 04:12:44	4	299	DMA-T2K_A11(C01)下道異常検出
2016/05/25 12:19:34	21	45.0	DMA-T2K_A11(C02)下道異常検出
2016/05/25 09:07:05	20	39.9	DMA-T2K_A11(C02)下道異常検出
2016/05/25 09:05:47	5	501	DMA-T2K_A11(C02)下道異常検出
2016/05/25 02:18:04	4	299	DMA-T2K_A11(C02)下道異常検出
2016/05/24 18:09:00	21	45.0	DMA-T2K_A11(C02)下道異常検出
2016/05/24 17:52:23	20	39.9	DMA-T2K_A11(C02)下道異常検出
2016/05/24 17:30:57	21	45.0	DMA-T2K_A11(C02)下道異常検出
2016/05/24 17:01:15	20	39.9	DMA-T2K_A11(C02)下道異常検出
2016/05/24 16:36:56	21	45.0	DMA-T2K_A11(C02)下道異常検出
2016/05/24 09:28:06	20	39.9	DMA-T2K_A11(C02)下道異常検出
2016/05/24 09:08:49	5	501	DMA-T2K_A11(C02)下道異常検出
2016/05/24 08:16:16	21	45.0	DMA-T2K_A11(C02)下道異常検出

Show the last 30 days' worth of alerts



Display paths taken by moving terminals

## Use KDDI IoT Cloud Standard for

- Monitoring factory equipment
- Building security
- Patient monitoring
- Health management
- Maintaining comfortable offices
- Managing greenhouse/warehouse temperature
- Tracking delivery trucks



## Contact information



<http://bit.ly/2f7lhsX>